

We make wireless data work

# AirLink Tracking System

AirLink offers a complete family of products that include both end-user software applications and APIs designed to allow vertical market integrators, developers and end-users to take advantage of AirLink's technology. These products are the latest in innovative, productivity-enhancing mobile solutions for companies in a wide variety of markets.

PinPoint modems are designed for commercial applications and are the perfect choice for AVL/Dispatch and Public Safety applications. In addition to the rugged industrial design, the embedded software can be customized to include all or part of a remote application.

AirLink's customers come from a variety of industries, and use the products for everything from monitoring oil wells in Oklahoma to tracking tour bus fleets in Hawaii, anywhere there is a need for critical instant wireless information.

### AirLink Communications

472 Kato Terrace  
Fremont, CA 94539

info@airlink.com  
www.airlink.com

Phone: 510-226-4200  
Fax: 510-226-4299

The AirLink Tracking System (ATS) is a powerful fleet management tool with a flexible interface. ATS works with the reliable and field proven AirLink PinPoint modem.

With ATS, you can view your fleet from multiple PCs from any location over the internet. Field personnel can track their drivers from laptops remotely and at any time.

#### ATS Plus

ATS Plus adds 2-way messaging. ATS Plus supports in-vehicle terminals connected to the PinPoint modem and two-way communications between the vehicle and dispatcher. These terminals can be laptops, mobile data terminals, and handheld PCs.

#### CDPD Wireless Data Network

ATS runs over cellular CDPD, the most widely deployed and reliable public data network available.

#### Simple to Use

ATS is a easy to use intuitive graphical user interface designed for dispatchers, and provides a easy to understand and configure interface. It is ideal for real-time dispatching, and resides, along with maps, on the dispatchers computer. Pointing and clicking on a street gives that locations address.

#### Powerful Tool

ATS is used by dispatchers in a variety of industries. These include Ambulance, police, fire, tow-truck, field support, and many others. AirLinks' Geo-Fencing let's you set tracking boundaries. If a vehicle passes a geographic boundary, the modem can reconfigure itself to send updates at a different interval.

#### Features:

- Multiple Window Display
- Track one, all or groups of vehicles
- Intervals configurable per vehicle
- Vehicle position update by time or distance
- Geo-Fencing
- Echo-Client feature lets you view your fleet from multiple PCs anywhere
- Detailed easy-to-use maps
- Multiple map display
- 10 levels of zoom on each map
- Fast maps updates
- Record and play back each vehicle
- In-vehicle units can connect to terminals

**AirLink**  
Communications

## We make wireless data work

### AirLink Tracking System

#### Fleet Applications

Limousine  
Shuttle and Charter Bus  
Ambulance  
Field Service Support  
Waste Management  
Repair Service  
Law Enforcement  
Tow-Trucks  
Private Security and Patrol  
Pest control  
HVAC  
Municipal and county fleets

#### Reporting

- Length of time at one location.
- Speeding reports.
- Zone Reports "Geo-Fencing" show when vehicles enter or exit user defined areas.
- Distance intervals down to less than 300 feet.
- Street address find.
- Locate closest vehicle to street address.
- Display street address numbers on map.
- Update by both interval distance and time.
- Frequency of reports user configurable.
- Update and change Individual times by vehicle.
- Filtered variable time and distance reports.
- Group vehicle tracking.
- Playback single or multiple vehicles trails.
- Reports automatically stored for long term.

AirLink Communications

472 Kato Terrace  
Fremont, CA 94539

info@airlink.com  
www.airlink.com

Phone: 510-226-4200  
Fax: 510-226-4299

#### Open Architecture

AirLink's open architecture enables simple integration with other application software.

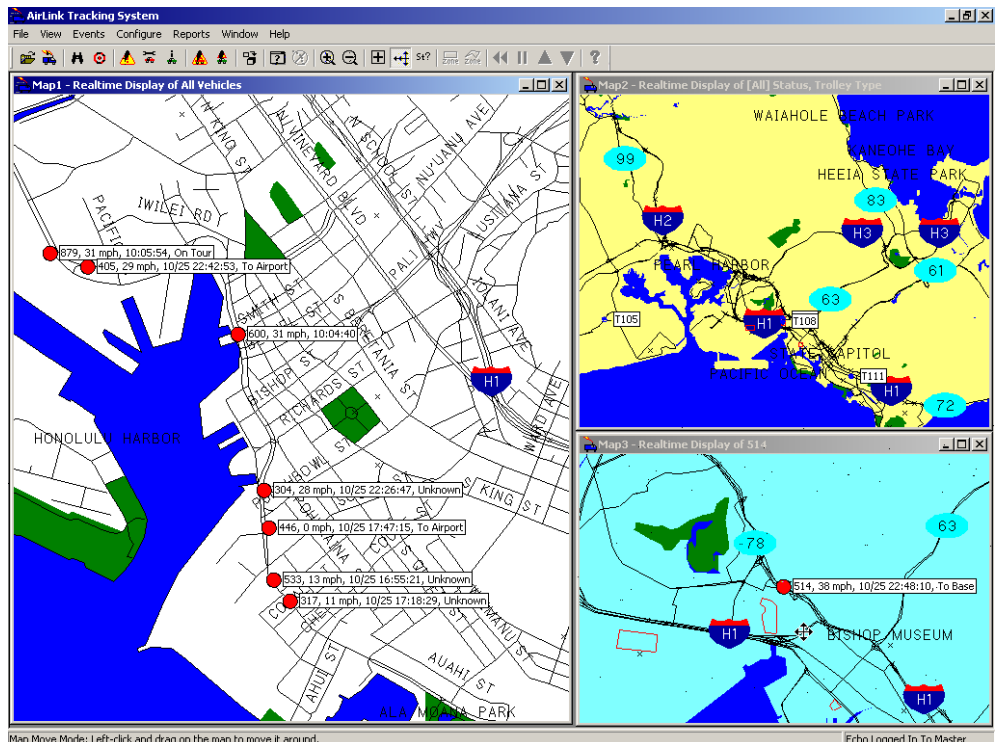
#### Feature Rich

Each vehicle is tracked individually, and their information is recorded for playback at a later date. Alerts can be configured to notify the dispatcher if a tracked vehicle passes a geographic boundary, violates a velocity setting, or any of a number of other events.

Geo Fencing allows zoning designations where users can define areas of high interest on a map that cause the system to generate events when monitored assets move in and out of the zone. User definable zones Vehicle reporting parameters can be automatically changed based on zone entry Zone alerts sent when vehicles enter and exit zones Zones can be marked with unique icons and labels

#### System Requirements

ATS and ATS Plus work only with AirLink PinPoint modems ATS must run on a Pentium 200 Mhz.PC or higher with a minimum of 64 megs of memory running Windows 98, 2000, or NT. A high resolution monitor and quality (Min 4 Mb video RAM) graphics card will allow better viewing of the display. 500 Mbytes of space is required on the hard drive.



**AirLink**  
Communications